

ENGINEERED PROCESS SYSTEMS FOR THE POWER GENERATION, OIL & GAS AND CHEMICAL INDUSTRIES



MWM
met weld international



Met Weld International (MWI) is a leading supplier of Engineered Process Systems and Industrial Controls for the power generation, oil & gas and chemical industries. For over 35 years, MWI has supported global industry with a full line of services and capabilities, including integrated design, engineering, manufacturing and fabrication. MWI's single location and quality systems deliver a controlled approach to each project and ensure the highest level of quality and service for our customers.

Packaged Systems

MWI's experienced team of engineers and skilled craftsmen is dedicated to the design, fabrication and assembly of custom, turnkey engineered packaged systems. Fortune 500 companies depend on MWI's experience and knowledge to transform their concepts and specifications into reliable finished products. MWI has extensive experience designing, engineering and manufacturing a wide range of modular systems.

Typical Systems Include:

- Fuel Oil Forwarding & Pumping Systems
- Fuel Gas Conditioning Systems
- Fuel Oil Conditioning Systems
- Fuel Gas Heating Systems
- Fuel Oil Heating Systems
- Nuclear Process Systems
- Chemical Injection Systems
- Process Monitoring Systems
- Fuel Gas Scrubbers & Knockout Drums
- Gas Extraction Systems
- Liquid Fuel Monitoring/Vanadium Monitoring Systems
- Fuel Gas Pressure Reduction Systems



Facilities Overview

MWI's manufacturing facility outside of Albany, NY is ideally equipped to meet the demands of our global customer base:

- 55,000 ft² high-bay fabrication facility with 40 ton overhead crane capacity
- Capable of welding in the GTAW, SMAW, GMAW and FCAW Processes (Twenty-Five Weld machines)
- Arc Burn and 3-Axis welding capabilities (up to 72")
- Full inventory of fabricating equipment (brakes, shear, saws, plate roll, etc.)
- Vertical and Horizontal boring capabilities
- In-House Electronics & Panel Shop
- In-House Pipe Fabrication Shop
- In-house Finishing and Painting Capabilities: Two 20' X 40' paint booths, One 20' X 36' blast booth and Two 500,000 btu/hr 10,000 ft² ovens
- Dedicated testing area: 1,000 gallon flushing and functional testing system (oil), 3,000 gallon functional testing system (oil), and 1,000 gallon hydro-testing system (water)

In addition to our US engineering and manufacturing capabilities, MWI maintains a presence in the Middle East with a full-time sales and project engineering support person in Dubai, UAE.

Quality Assurance



MWI is dedicated to delivering the highest quality services and products. Recognizing the critical nature of our work, MWI has quality programs in place to ensure that our customers receive reliable product on time. MWI is proud of the fact that our process systems skid testing and validation, documentation and quality control procedures typically exceed our customers' expectations for quality assurance.

Inspection & Certification

Whether an engineering prototype or production quantities, every piece of equipment MWI builds is thoroughly tested to meet our customers' specifications and to be in accordance with current industry standards. Our quality program is reviewed and approved by both the ASME and the National Board. MWI's Qualifications include:

Code Vessels:

- ASME VIII Certified Code Vessel Shop
- NBIC Certified Code Vessel Repair Shop

Non-Destructive Testing:

- ASME and ASNT Certified In-House NDE program
- Dry-Powder Magnetic Particle Testing
- Wet-Fluorescent Magnetic Particle Testing
- Liquid-Dye Penetrant (Fluorescent and Invisible)
- Hydrostatic Testing
- High and Low Pressure Leak Testing

Destructive Testing:

- In-House Pull and Tensile Test



Engineering Services

MWI's complete staff of mechanical and electrical engineers is dedicated to helping our customers transform functional specifications to final design. Our ability to work hand-in-hand with engineering departments allows us to develop a solution-oriented approach to our customers' needs. Our services are enhanced through the use of programs such as:

- AutoCAD (General and 3D Design)
- CADWorx (3-D Engineering Design)
- Caesar II (Structural / Pipe Stress Analysis)
- Advanced Pressure Vessel Design

MWI's ability to provide both engineered process systems and in-house electrical controls eliminates the need for our customers to source multiple vendors.



Liquid Fuel Pumping Systems



Liquid Fuel Forwarding Systems



Liquid Fuel Coalescing Systems



Liquid Fuel Transfer Systems



Liquid Fuel Recirculation Systems



Liquid Fuel Unloading Systems

PLC Control Systems



Heater Control Building



Detail: Switches, SCR Units



Detail: SCR Units, Controller



Detail: Controller

Liquid Pumping & Unloading Systems



Liquid Process Unloading System



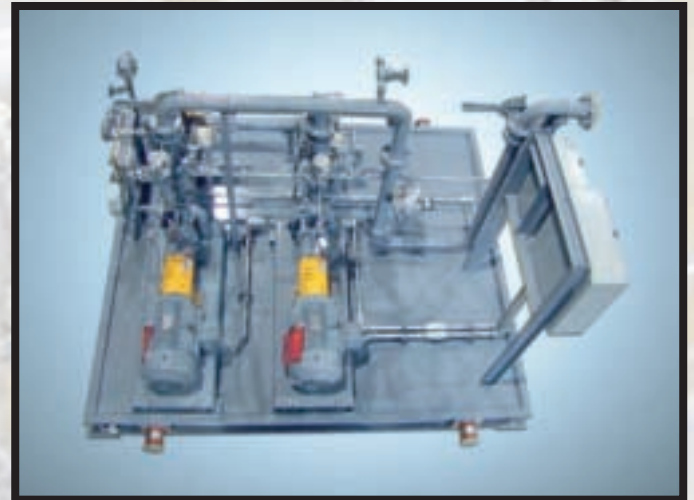
Liquid Process Pumping System



Liquid Process Pumping/Heating System



Liquid Process Pumping System



Liquid Process Pumping System

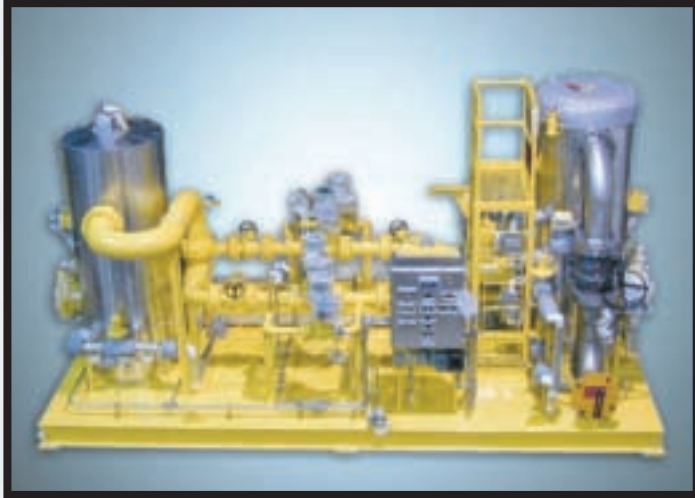


Liquid Process Unloading System



Liquid Process Unloading System

Gas Conditioning Systems



Gas Process Conditioning System



Detail Single Gas Path Pressure Reducing System



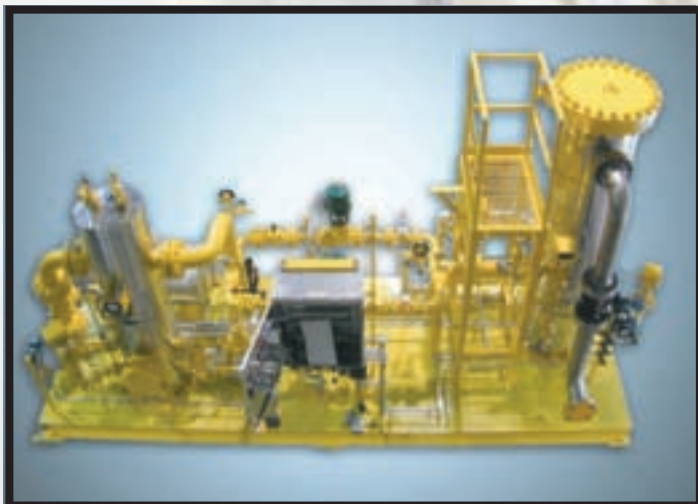
Detail: Knockout Drum



Detail: Hydrocarbon Drainage Tank



Detail: Coalescer Filter Vessel



Gas Process Conditioning System



Detail: Dual Gas Path Pressure Reducing System

Liquid Process Heating Systems



Liquid Process Heating System



Liquid Process Heating System



Liquid Process Heating System



Liquid Process Pumping & Heating System

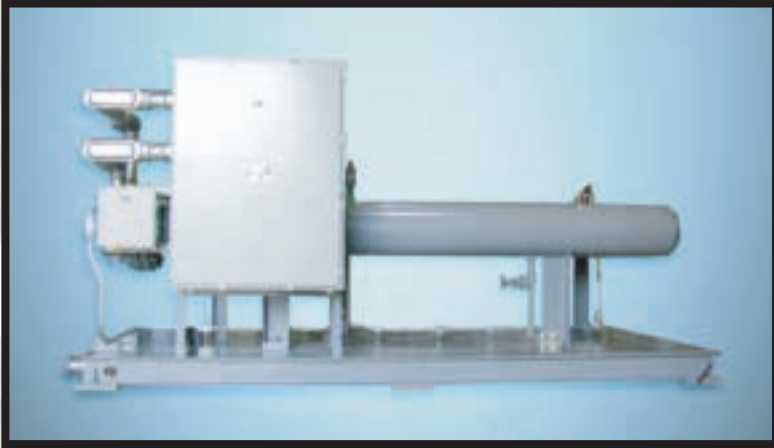


Liquid Process Heating System Vertical Heaters



Liquid Process Heating System Vertical Heaters

Gas Heating Systems



Gas Process Heating System



Gas Process Heating System



Gas Process Heating System



Gas Process Heating System

Liquid Fuel Treatment Systems



Liquid Process Centrifuge



Liquid Process Centrifuge (with enclosure)



System Interior



System Control Panel

Gas Heating and Filtration Systems



Duplex Gas Coalescing Filter System



Gas Process Particulate Filter Vessels



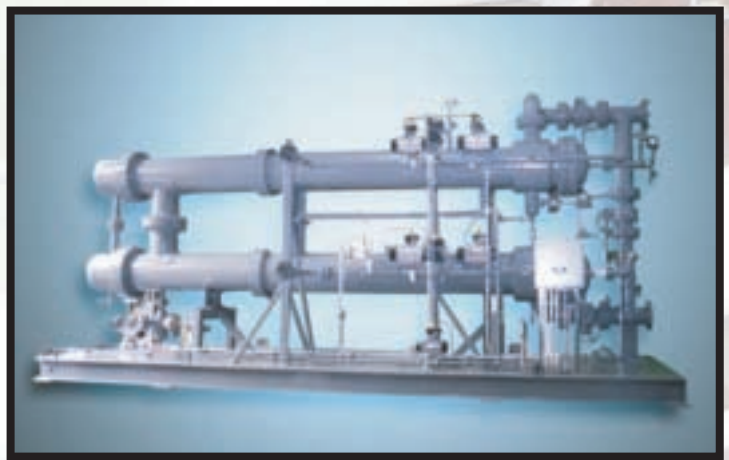
30" Diameter Knockout Drums



24" Diameter Knockout Drums



Duplex Gas Coalescing Filter System



Gas Performance Heating System

Process Systems Controls



Heater Control Panel - Exterior



Heater Control Panel - Interior



Integrated Systems Control Panel



Fuse Panel



Various Heater Control Panels



Motor Control Junction Box



Integrated Systems Control Panel



MWM

met weld international

CUSTOMER LIST

ALFA LAVAL	Liquid Fuel Treatment Systems
ARABIAN BEMCO CONTRACTING CO. LTD.	Liquid Fuel Forwarding, Unloading and Transfer Systems
ATLAS COPCO COMPRESSORS	Fuel Gas Systems
BURNS AND MCDONNELL	Fuel Gas Conditioning Systems
ENERGY SOLUTIONS	Radiation Waste Process Systems
EMIRATES TRADING AGENCY	Liquid Fuel Forwarding, Unloading and Transfer Systems
FLOUR CORPORATION	Liquid Fuel Vertical Handling Systems
GENERAL ELECTRIC	Liquid Fuel Forwarding, Unloading and Transfer Systems. Fuel Gas Filtration, Heating and Pressure Reducing / Control Systems.
GEOHERMAL ASSOCIATES	Turbine Exhaust Systems
KIEWIT CORPORATION	Fuel Gas Conditioning Systems
NHWL ENGINEERING	Liquid Fuel Unloading & Forwarding Systems
NOONEY CONTROLS	Fuel Gas Pressure Reducing Systems
SEGA, INC.	Fuel Gas Conditioning Systems
SIEMENS	Liquid Fuel Forwarding, Unloading and Transfer Systems. Fuel Gas Filtration, Heating and Pressure Reducing / Control Systems.
TRI-NUCLEAR CORPORATION	Nuclear Waste Filtration Systems

ENGINEERED PROCESS SYSTEMS FOR THE POWER GENERATION, OIL & GAS AND CHEMICAL INDUSTRIES

Industries:

- Power Generation
- Chemical
- Petroleum & Petrochemical
- Pharmaceutical
- Paper-Making
- Water Treatment
- Food Processing
- Nuclear

Services:

- Fuel Gas Handling Systems
- Fuel Oil Handling Systems
- Electrical Controls & Systems
- Fluid & Gas Process Systems
- Code-Stamped Pressure Vessels & Tanks
- Filtration Systems
- Documentation & Traceability
- Engineering & Design
- Site Project Engineering Support (Americas, Europe, Middle East)

Met Weld International Contacts:

Jim Carter

Manager Engineered Packaged Systems Sales and Marketing
518-765-8329 / jcarter@metweldintl.com

Dan Hill

Director of Operations / Engineering Manager
dhill@metweldintl.com

Shahid Mughal

System Engineer / General Manager U.A.E., Gulf & GCC Countries
samughal@metweldintl.com

MWI Headquarters

5727 Ostrander Road, Altamont, NY 12009
(518) 765-2318 phone • (518) 765-2310 fax
www.metweldintl.com

MWI Middle East

P.O. Box 76955, Dubai, UAE
+ 971 50 6877163 - UAE
+ 966 50 7318199 - KSA



***Met Weld International LLC is a wholly owned subsidiary of Gavial Engineering & Manufacturing, Inc.**

1435 West McCoy Lane, Santa Maria, CA 93455
(805) 614-0060 phone • (805) 614-0059 fax • www.gavial.com